

# SSFA comparison

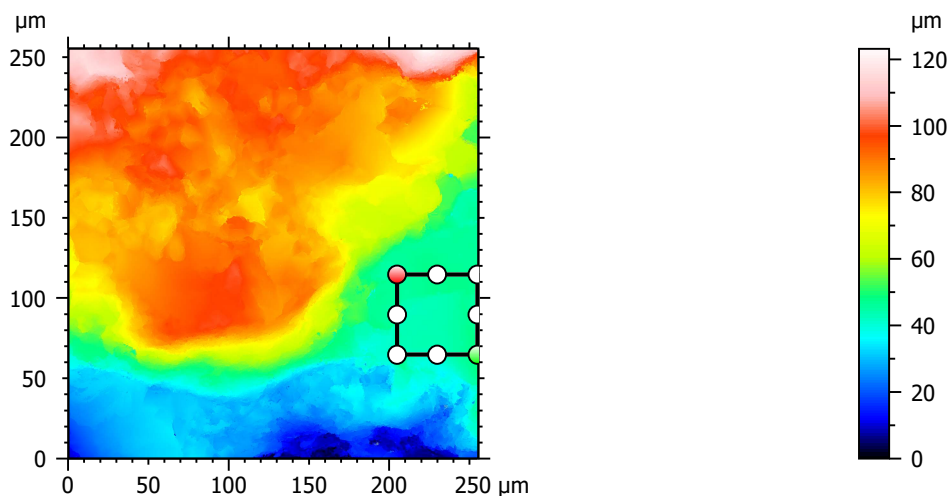
Template to process all lithic surfaces acquired with the Zeiss LSM 800 with the 50x/0.95 objective.

## A. Processing

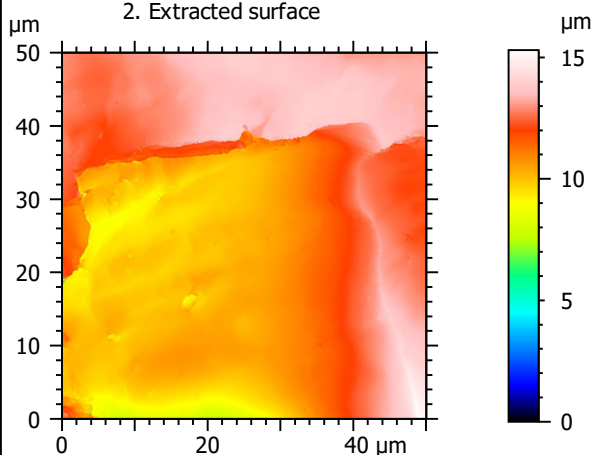
### Identity card

Name:	QTZ3-5_LSM2_50x-0.95_20190731_Area2_Topo		
File path:	D:\Data\3Ddata\SSFA\Lithics\Original surfaces\QTZ3-5_LSM2_50x-0.95_20190731_Area2_Topo.sur		
Created on:	7/31/2019 1:45:55 PM		
Studiable type:	Surface		
Axis:	X		
Length:	255.5	μm	
Size:	3000	points	
Spacing:	0.08519	μm	
Axis:	Y		
Length:	255.5	μm	
Size:	3000	points	
Spacing:	0.08519	μm	
Axis:	Z		
Layer type:	Topography		
Length:	123.1	μm	
Size:	65531	digits	
Spacing:	0.001879	μm	
NM-points ratio:	0.000 % (0 Pts)		

### 1. Acquired surface

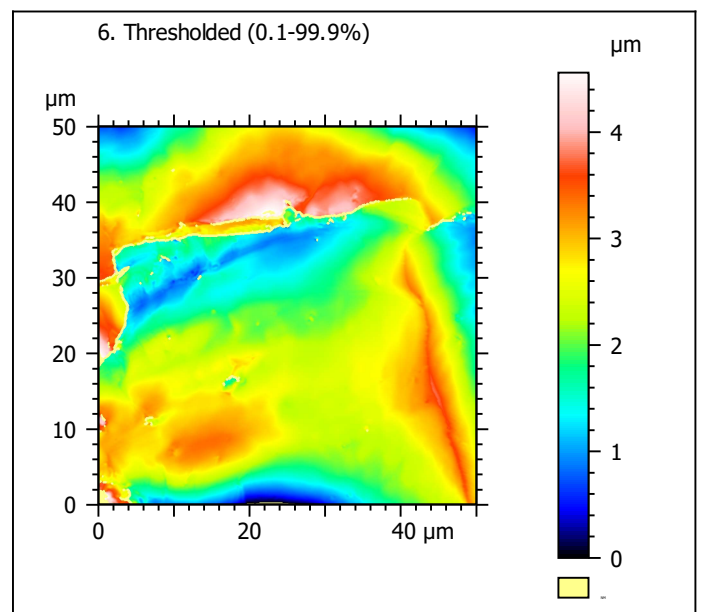
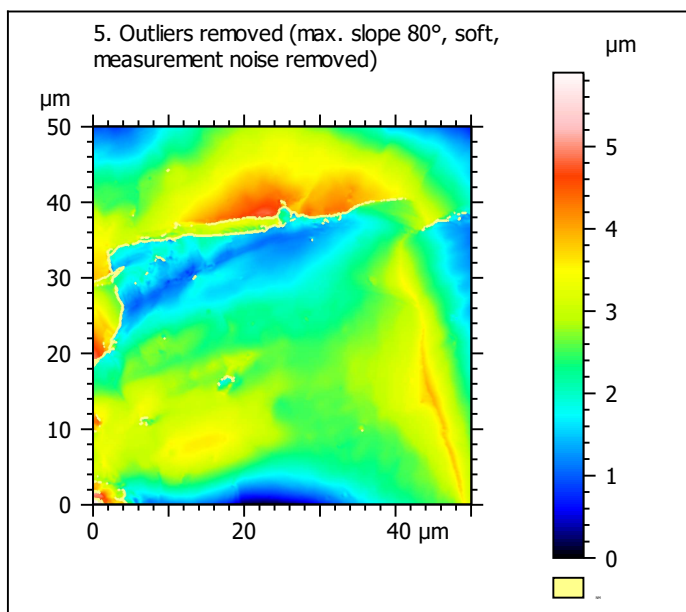
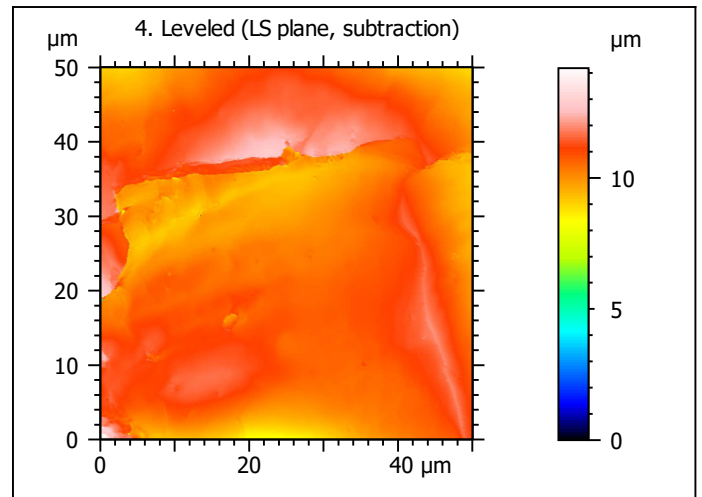
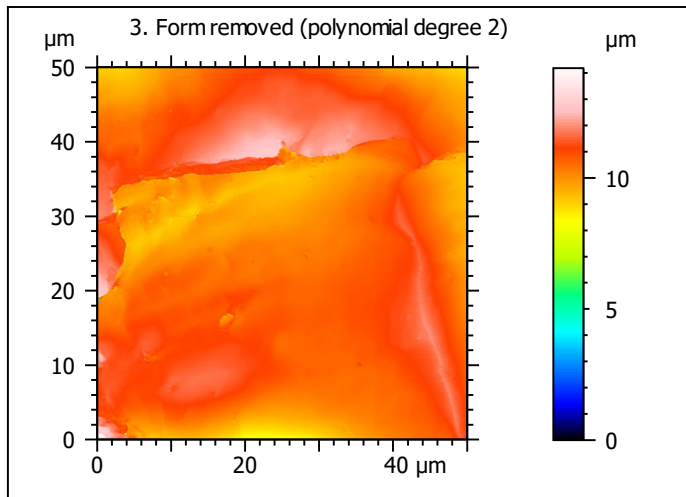


### 2. Extracted surface



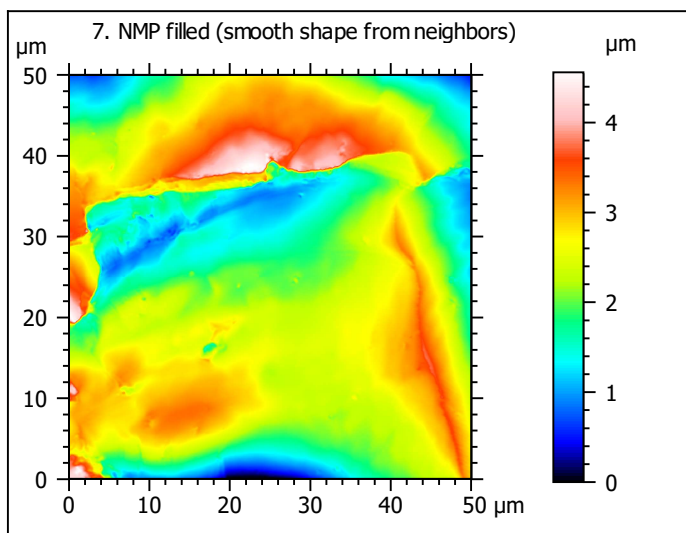
### Identity card

Name:		QTZ3-5_LSM2_50x-0....opo > Extracted area		
Axis:		X		
Length:	50.00	μm		
Size:	588	points		
Axis:		Y		
Length:	50.00	μm		
Size:	588	points		
Axis:		Z		
Layer type:	Topography			
Length:	15.30	μm		
Size:	8143	digits		
NM-points ratio:	0.000 % (0 Pts)			

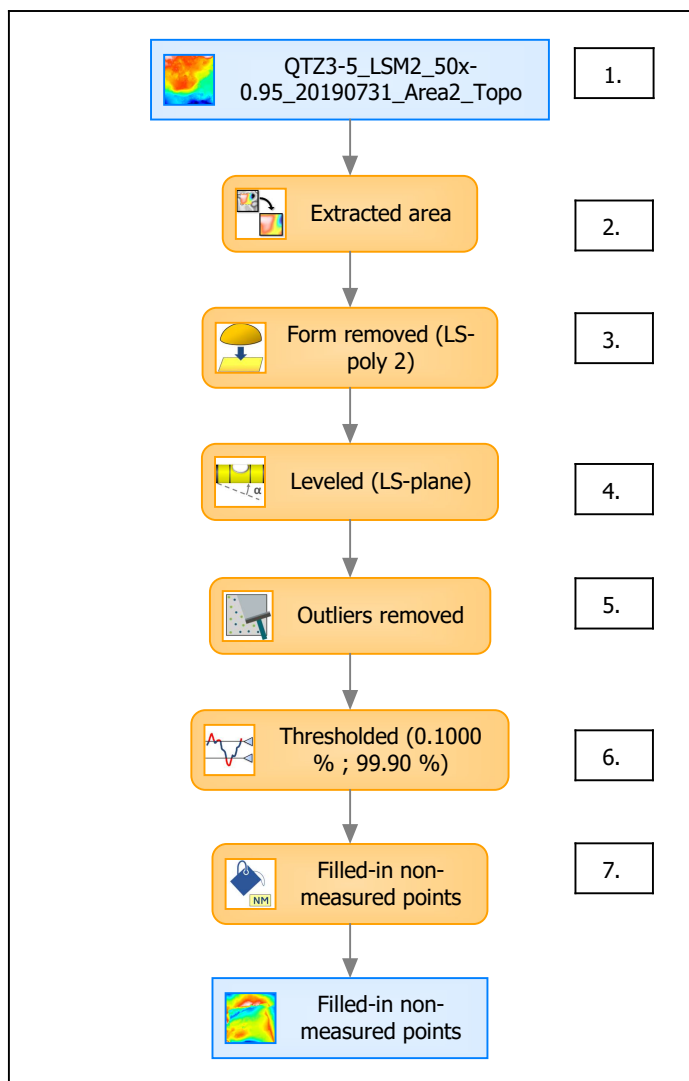


Identity card	
Name:	QTZ3-5_LSM2_50x-0....e) > Outliers removed
Axis:	Z
NM-points ratio:	1.536 % (5309 Pts)

Identity card	
Name:	QTZ3-5_LSM2_50x-0....0.1000 % ; 99.90 %)
Axis:	Z
NM-points ratio:	1.732 % (5987 Pts)



## B. Summary



### Identity card

Name: QTZ3-5\_LSM2\_50x-0.95\_20190731\_Area2\_Topo > Extracted are...resholded (0.1000 % ; 99.90 %) > Filled-in non-measured points

Studiable type: Surface

#### Axis: X

Length: 50.00  $\mu\text{m}$   
Size: 588 points  
Spacing: 0.08519  $\mu\text{m}$

#### Axis: Y

Length: 50.00  $\mu\text{m}$   
Size: 588 points  
Spacing: 0.08519  $\mu\text{m}$

#### Axis: Z

Layer type: Topography

Length: 4.559  $\mu\text{m}$   
Size: 2426 digits  
Spacing: 0.001879  $\mu\text{m}$

